



TASKalfa 5550ci | Color Multifunctional System

Powering Color
Performance...
Company-wide.



Taking Flexibility and Performance to New Heights

Designed specifically for your business, the TASKalfa 5550ci incorporates **high productivity** at 55 ppm black and 50 ppm color, **flexible configurations**, **vibrant image quality** and **advanced finishing** to handle both day-to-day document needs as well as more complex projects with ease. **Exceptional color technology** enables you to create finished pieces with professional polish, while **integrated business applications** provide the added power and capabilities to help simplify your document workflow. An optional EFI Fiery® Controller is also available for more professional document output.

Kyocera's **award-winning ultra-reliability** and unique long-life technology ensure superior performance, proven productivity and maximum efficiency. When it comes to document imaging innovation and quality you can rely on, the TASKalfa 5550ci delivers.



Innovation for Your Office through Feature-Rich Design

The TASKalfa 5550ci is strong on features and configurations, offering the flexibility to scale your MFP to the specific needs of your office. It's all about feature-rich design with a focus on value and exceptional color functionality.

TASKalfa 5550ci is rated Highly Recommended and Reliability Certified by Buyers Laboratory, Inc.

Only From Kyocera

KYOCERA Document Solutions is a global leader in the digital imaging industry, with an award-winning line of TASKalfa multifunctional systems and ECOSYS laser printers, products that consistently set the standard for high performance, superior image quality, ease-of-use and durability. Along with a full complement of advanced business applications and networking solutions, Kyocera's robust product line supports your need for maximum productivity at minimal total cost.

Kyocera continually strives to raise the bar for excellence in both products and service for exceptional results you and your business can count on.



Keeping the Future Green

Kyocera is committed to pursuing a harmonious balance between economic development and environmental preservation. We adhere to the goals of our worldwide Environmental Action Plan in developing office solutions with environmentally friendly and superior energy- and supply-saving features, without compromising your productivity.

- **Super fast processing speeds** of 750 MHz, with standard 2 GB of RAM and Dual 160 GB of Hard Disk Drive space support exceptional all-in-one productivity.
- An integrated 10.2" **Color Touch-screen Control Panel** offers outstanding clarity and easy viewing. Intuitive prompts, on-board help guidance and accessibility display, make programming your jobs from the device quick and effortless.
- The **long life technology** and '**class leading**' drum yields deliver extended preventive maintenance intervals and maximize device "uptime". This adds up to ultra-reliable operation and a low total cost of ownership.
- **Kyocera Command Center RX**, the MFP's embedded web home page, gives you the remote access you need to check device status, establish system settings, or access stored Document Box files from your desktop.
- **Robust connectivity** features including standard Gigabit Ethernet, offer seamless integration within virtually any network environment or platform.
- A standard **USB Host Interface** provides convenient print-from or scan-to capabilities for today's 'on the go' workforce in XPS, PDF, JPEG and TIFF.
- The ability to choose between an optional high speed 175 sheet **Dual Scan Document Processor** or a 100 sheet **Reversing Automatic Document Processor** enables super fast scan speeds of up to 140 images per minute.
- The optional **1,000-sheet** and **4,000-sheet finishers** with multi-position staple provide the professional touch your output deserves, and lets you efficiently handle production runs in-house, optimizing time and minimizing costs.
- **Impressive toner yields** of 30,000 pages for black and 20,000 pages for each color, allow you to run long print jobs with maximum quality and productivity, while minimizing interruption.

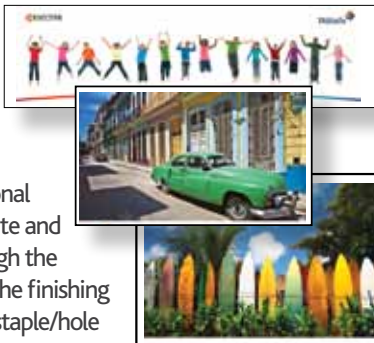
The Power to Take Control of Everyday Tasks and Keep Information Moving

Information is your most important business asset, and you need a 'no holds barred' document imaging system to keep it flowing seamlessly. The TASKalfa 5550ci raises the bar on core functionality with unparalleled efficiency:

- **Exceptional print and copy capabilities** power your communications via robust paper handling up to 12" x 47" and 110 lb cover, plus a remarkable 7,650 sheet maximum paper capacity for long print runs with minimal interruptions.
- **Secure Document Box** lets you keep frequently used documents close at hand for hassle free printing, secure file sharing and pin-based Private Print.
- Pre-program and store commonly used copy, scan and print settings at the control panel and the KX Driver to simplify your daily tasks.
- Optional **Super G3, LAN fax** and dual fax capability adds versatility while leveraging your investment in an MFP.

Color and Advanced Finishing Make a Professional Statement

The TASKalfa 5550ci is the smart choice for businesses who need color for both their daily business documents as well as those occasional high-impact pieces. Easily manipulate and optimize color with precision through the KX Driver's Imaging Tab. Then add the finishing touch with simple options such as staple/hole punch, or more advanced options including booklets and tri-folds. For more graphic-intensive workflows, an optional Fiery® Controller lets you elevate your color to the next level.



Enhanced MFP Performance... Powered by HyPAS®

Enhance your TASKalfa 5550ci's capability with unique and scalable business applications, *powered by HyPAS* –Kyocera's powerful software development platform. These applications, developed by Kyocera or by our third-party solution partners, allow your business to further optimize your TASKalfa MFPs' "out-of-the-box" performance. Kyocera applications transform your MFP into a powerful resource that suits your existing document imaging and workflow needs today, as well as delivers the flexibility you need for tomorrow.

Kyocera's expanding suite of business applications include:

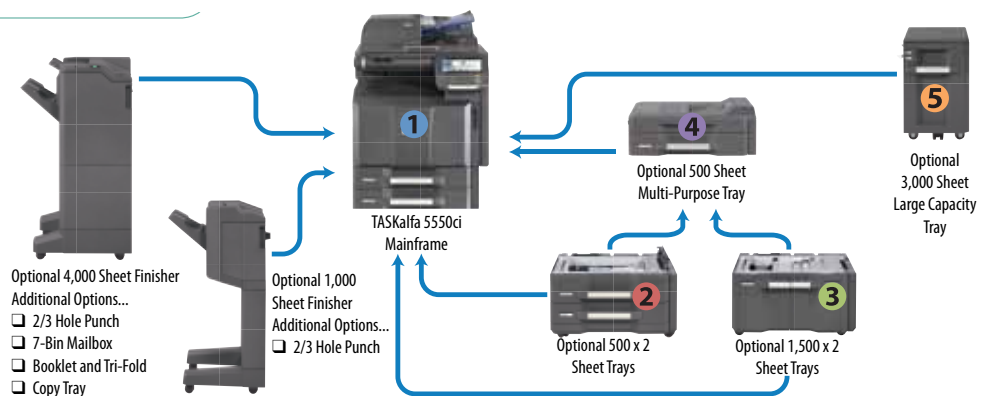
- **KYOCERA Mobile Print** - Simply and conveniently print files, web pages, and images using your smartphone or tablet.
- **OpenText RightFax Connector** - Scan and send documents to the RightFax server directly from TASKalfa MFPs for full fax server integration.
- **SharePoint Connector** - Microsoft SharePoint users can scan documents into their SharePoint folder and libraries to search/print directly from the TASKalfa MFP control panel.
- **Card Authentication** - Authenticate, Authorize and Track individual MFP usage with the simple swipe of an HID-card.
- **DMS Link** - Connect your TASKalfa MFP to most popular document management systems for document capture and routing.

Visit www.kyoceradocumentsolutions.com to learn more about additional business applications designed to fit your essential needs.

Which Configuration is Right for You?

Truly designed with you in mind, the TASKalfa 5550ci brings configuration flexibility to the workplace, allowing you to customize the MFP to your specific paper handling needs.

Paper Handling Flexibility		
In-Line	Side Deck	Total Paper Capacity
1		= 1,150 sheets
1 + 2		= 2,150 sheets
1 + 3		= 4,150 sheets
1 + 2 + 5		= 5,150 sheets
1 + 3 + 5		= 7,150 sheets
1 + 2 + 3 + 4		= 3,650 sheets
1 + 2 + 3 + 4		= 5,650 sheets
1 + 3 + 2 + 4		= 5,650 sheets
1 + 3 + 3 + 4		= 7,650 sheets





Shown with optional 175 sheet DSDP and 1,500 x 2 sheet paper trays



Shown with optional 175 sheet DSDP, optional 1,500 x 2 sheet trays, and 1,000 sheet finisher



Shown with optional 175 sheet DSDP, 2 - 500 x 2 sheet paper trays, 500 sheet multi-purpose tray, and 4,000 sheet finisher



Newly designed, easy-to-use large color touch screen control panel

HyPAS™

Hybrid Platform for Advanced Solutions

Basic Specifications

Configuration	Color Multifunctional System – Print/Scan/Copy/Optional Fax
Pages Per Minute	Black – Letter: 55 ppm, Legal: 21 ppm, Ledger: 27 ppm, 12" x 18": 27 ppm (print only) Color – Letter: 50 ppm, Legal: 21 ppm, Ledger: 25 ppm, 12" x 18": 25 ppm (print only)
Warm-up Time	30 Seconds or Less (Power On)
First Page Out	Copy: 4.4 Seconds or Less Black, 5.7 Seconds or Less Color; Print: 4.9 Seconds or Less Black, 6.2 Seconds or Less Color
Resolutions / Bit Depth	600 x 600 dpi; 9600 x 600 dpi interpolated / 8 bit depth
Memory / Hard Disk Drive	2 GB RAM Standard / Dual 160 GB HDD
Duplex	Standard Stackless Duplex Supports Statement to 12" x 18", 16 lb Bond - 140 lb Index (60 – 256gsm)
Standard Output Tray	Statement - 12" x 18" / 250 sheets; up to 12" x 47" Banner/Single Sheet
Electrical Requirements	120V, 60Hz, 12.0A
Dimensions / Weight	26.30" W x 30.20" D x 29.41" H / 251.33 lbs
Max Monthly Duty Cycle	225,000 Pages Per Month

Paper Supply

Standard Paper Sources	Dual 500 Sheet Trays, 150 Sheet MPT; Auto Selection/Switching
Optional Paper Sources	Dual 500 Sheet Trays (PF-730), Dual 1,500 Sheet Trays (PF-740); Side LCTs: 500 Sheet Multimedia Tray (PF-780), 3,000 Sheet Large Capacity Tray (PF-770)
Paper Capacity	Standard: 1,150 Sheets; Maximum: 7,650 Sheets
Paper Size	Trays 1, 2, PF-730, PF-780; 5.5" x 8.5" – 12" x 18"; PF-740, PF-770: 8.5" x 11"; MPT: 5.5" x 8.5" – 12" x 18" (Multiple Sheets); Up to 12" x 47" Banner (Single Sheet)
Paper Weight	Trays: 16 lb Bond – 140 lb index (60 – 256gsm); MPT: 16 lb Bond – 110 lb Cover (60 – 300gsm)
Input Materials	Bond Paper, Recycled Paper, Transparencies, Cardstock, Envelopes

Print Specifications

Standard Controller	IBM PowerPC 750GL / 750 MHz
PDLs / Emulations	PRESCRIBE, PCL6 (5c, XL), KPDL3 (PS3), XPS; Optional: UG-34 IBM ProPrinter, Diablo 630, LQ-850
Fonts	136 KPDL3, 93 PCL6, 8 Windows Vista, 1 Bitmap
Windows OS Compatibility	Windows XP/2003/Vista/2008/7
Novell OS Compatibility	Novell NetWare 3.x/4.x/5.x/6.x
MAC OS Compatibility	Mac OS 10.x
UNIX OS Compatibility	Sun OS 4.1.x; Solaris 2.x; AIX; HP-UX (LPR)
Interfaces	Standard: 10/100/1000BaseTX, Hi-Speed USB 2.0, 2 USB Host Interfaces, 2 Expansion Slots Optional: 10/100/1000BaseTX (IB-50 for Dual NIC)
Network Print and Supported Protocols	TCP/IP, IPX/SPX, AppleTalk, NetBEUI, IPv6, IPsec, SSL, WSD Print
Drivers	KX Driver, Mini Driver, KX Driver for XPS, XPS Mini Driver, Network Fax Driver, PPD for MAC
Utilities	PRESCRIBE, PDF Direct Print, KMnet Admin, KMnet Viewer, Kyocera Command Center RX

Scan Specifications

Scan Resolution	200, 300, 400, 600 dpi
File Formats	BW: TIFF, XPS, PDF, PDF/A; Color: TIFF, JPEG, XPS, PDF, PDF/A
PDF Extension	High Compression PDF, Encrypted PDF
Scan Speeds	DP-770: Simplex: 75 ipm BW, 75 ipm Color (300 dpi); Duplex: 45 ipm BW, 45 ipm Color (300 dpi) DP-771: Simplex: 80 ipm BW, 80 ipm Color (300 dpi); Duplex: 140 ipm BW, 110 ipm Color (300 dpi)
Connectivity / Supported Protocols	10/100/1000BaseTX, TCP/IP
Scanning Functions	Scan to Folder (SMB), Scan to e-Mail, Scan to FTP, Scan to USB, WSD Scan, TWAIN Scan
Original Size	Through DP: Statement to 11" x 17"; Glass: up to 11" x 17"
Driver	TWAIN/WIA Driver

Copy Specifications

Image Mode	Text, Photo, Text/Photo, Auto, Manual, Map
Continuous Copy	1 – 999 / Auto Reset to 1
Additional Features	Positive/Negative Reverse, Mirror Image, Rotate Copy, Border Erase, Split Copy, Electronic Sort, Margin Shift, Page Number, Form Overlay, XY Zoom, Prevent Bleed Through, Stamp
Job Management	1,000 Department Codes, Job Programs, Job Build, Shortcut Keys, Repeat Copy
Color Adjustment	One Touch, Hue, Auto Exposure, Sharpness
Magnification / Zoom	Full Size, 5 Reduction, 5 Enlargement Preset Ratios, 25 – 400% in 1 step increments
Document Box	Custom Box, Job Box, Removable Memory Box, Fax Box (with optional Fax System)
Document Processor	Optional DP-770 or DP-771
Type / Capacity	DP-770: Reversing Automatic Document Processor / 100 Sheets DP-771: Dual Scan Document Processor / 175 Sheets
Acceptable Originals	5.5" x 8.5" – 11" x 17"
Acceptable Weights (Simplex / Duplex)	(DP-770) Simplex: 13 lb Bond – 90 lb Index (45 – 160gsm); Duplex: 16 lb – 32 lb Bond (50 – 120gsm) (DP-771) Simplex: 13 lb Bond – 120 lb Index (35 – 220gsm); Duplex: 16 lb Bond – 120 lb Index (50 – 220gsm)

Fax Specifications

Compatibility / Data Compression	G3 Fax / MMR, MR, MH, JBIG
Transmission Speed / Modem Speed	Approximately 3 seconds per page / 33.6 Kbps
Fax Memory	Standard: 12 MB; Maximum: 120 MB
Driver	KM Network Fax Driver
Fax Functions	Duplex TX/RX, Confidential RX/TX, F-Code RX/TX, Broadcasting, Fax Box, Dual Fax

Optional 1,000 Sheet Finisher DF-770

Stack / Staple Capacity	Main Tray: 1,000 Sheets / 50 sheets (up to 24 lb Bond 90gsm)
Paper Size	5.5" x 8.5" – 12" x 18"
Paper Weight	16 lb Bond – 110 lb Cover (60 – 300gsm)
Edge Staple Position	3 Positions: Top Left, Bottom Left, Center Bind
Optional Punch	PH-7A 2 and 3 Hole Punch Unit, Supports 8.5" x 11" – 12" x 18"; 13 lb Bond – 110 lb Cover (45 – 300gsm)

Optional 4,000 Sheet Finisher DF-790

Stack / Staple Capacity	Main Tray: 4,000 Sheets; Sub Tray (B): 200 Sheets; Sub Tray (C): 100 Sheets / 65 sheets (up to 24 lb Bond (90gsm))
Paper Size	5.5" x 8.5" – 12" x 18"
Paper Weight	16 lb Bond – 110 lb Cover (60 – 300gsm)
Edge Staple Position	3 Positions: Top Left, Bottom Left, Center Bind
Optional Multi-bin Mailbox	MT-730 Includes 7 Trays; Supports 16 lb Bond – 90 lb Index (60 – 163gsm) Stack Capacity per bin: 100 Sheets: 5.5" x 8.5", 8.5" x 11"; 50 Sheets: 8.5" x 14", 11" x 17"
Optional Punch	PH-7A 2 and 3 Hole Punch Unit, Supports 8.5" x 11" – 12" x 18"; 13 lb Bond – 110 lb Cover (45 – 300gsm)
Optional Booklet Folder / Tri-fold Unit	BF-730 Booklet Folder Supports 8.5" x 11", 8.5" x 14", 11" x 17"; 16 lb Bond – 24 lb Bond (60 – 90gsm) 16 sheets; 25 lb Bond – 28 lb Bond (91 – 105gsm) 13 sheets; Fold booklet – no staple: 16 lb Bond – 24 lb Bond (60 – 90gsm) 5 sheets; 25 lb Bond – 72 lb Index (91 – 120gsm) 3 sheets; 32 lb Bond – 110 lb Cover (121 – 256gsm) 1 sheet; Trifold: 16 lb Bond – 24 lb Bond (60 – 90gsm) 5 sheets; 25 lb Bond – 72 lb Index (91 – 120gsm) 3 sheets

Additional Options

Additional Options	Data Security Kit Provides Security Overwrite and Encryption for Print, Copy, and Scan, Optional System Memory, Optional Fax Memory, Original Hardcopy Holder (Document Tray), Card Authentication Kit, Banner Guide (A)
--------------------	--

Specifications and design are subject to change without notice.
For the latest on connectivity visit www.kyoceradocumentsolutions.com
All trademarks are the property of their respective owners.
KYOCERA Document Solutions America, Inc. Headquarters: 225 Sand Road, Fairfield, NJ 07004-0008, USA
©2012 KYOCERA Document Solutions America, Inc.
IC# 855D400307